

BSC Lite Stage

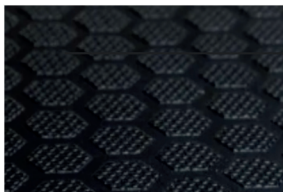


Introducing the latest in versatile, lightweight aluminium staging systems.

Easy to set up, transport, and store, the BSC Lite Stage provides a professional, reliable platform that adapts seamlessly to any meeting or event space.



Secure Interlocking System
Lightweight frames connect via a quick coupling system with an aluminium profile and built-in screw for a secure, stable fit to stop movement.



Deck Construction
Deck top surface is made from a durable 12 mm thick water-resistant, non-slip HEXA finished plywood, certified for fire resistance.



Secure Interlocking System
Double and quadruple steel clamps connect legs precisely, while quick couplings with built-in screws secure the frames for stability.



Deck Sizes: 1x1m or 2x1m	Deck Weight: 32kgs	Leg Heights: 20cm, 40cm or 60cm	Load Capacity Rating: 600 kg/m ²
-----------------------------	-----------------------	---------------------------------------	--



Accessories & Storage

A wide range of additional equipment is available to suit your stage setup needs, including modular stairs for easy access, stair handrails for added safety and dedicated trolleys for efficient transport and storage.